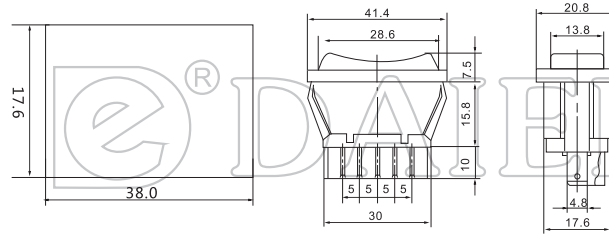
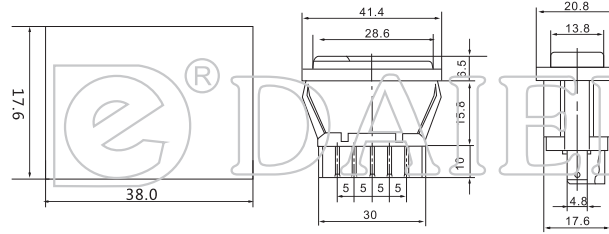




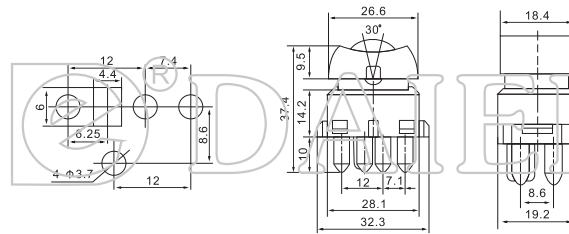
ASW-01
20A 12VDC;10A 30VDC
DPDT 5P



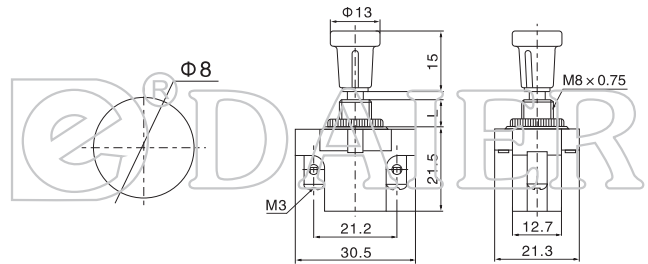
ASW-02D
20A 12VDC (with lamp)
DPDT 5P



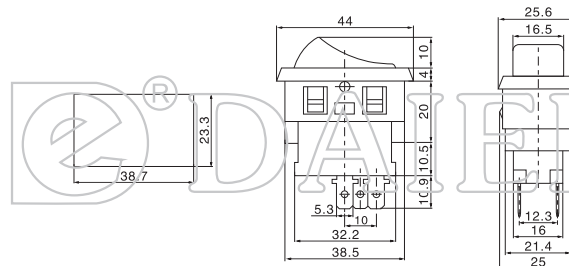
ASW-03 ASW-03D DPDT 4P
ASW-04 ASW-04D DPDT 5P
20A 12VDC



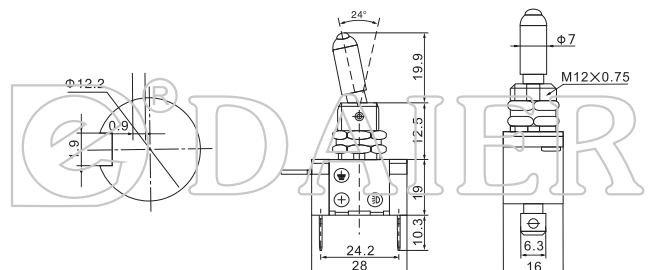
ASW-05 (L=7,13,20)
10A 12VDC;6A 30VDC
SPST 2P



ASW-06-101 ON-OFF 2P
ASW-06-102 ON-ON 3P
ASW-06-103 ON-OFF-ON 3P
10A 30VDC;20A 12VDC

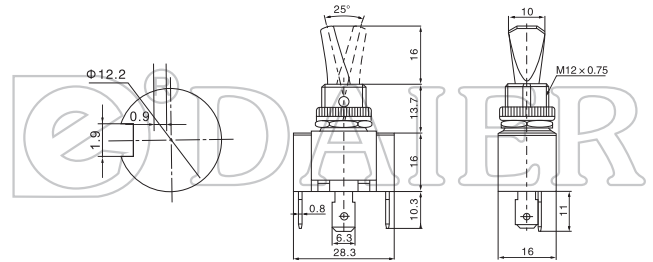


ASW-07D ON-OFF
25A 12VDC
SPST 3P (with lamp)
LED Color:Red, Yellow
Green, Blue, White, Purple

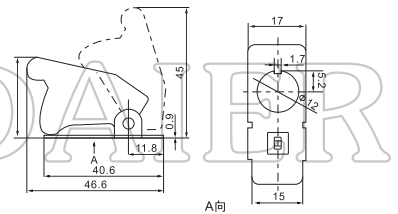




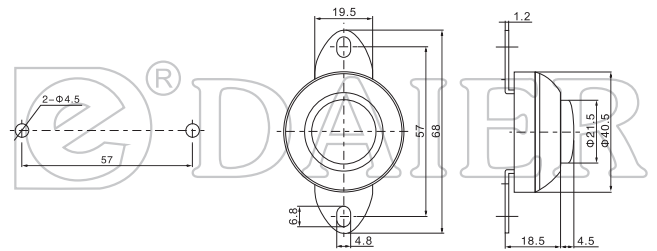
ASW-07D-2 ON-OFF
30A 12VDC
SPST 3P (with lamp)
LED Color: Red, Yellow
Green, Blue, White, Purple



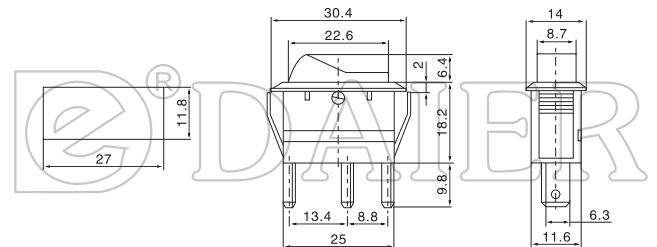
SAC-01
(Switch
Aircraft Cover)



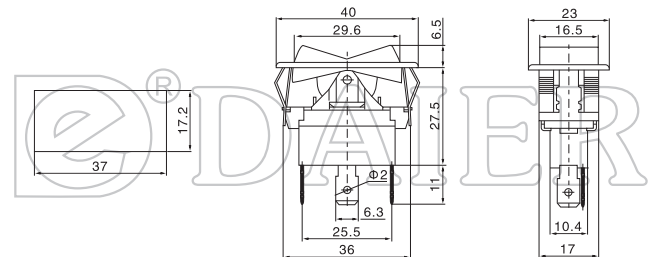
ASW-08 OFF-(ON)
3A 30VDC; 6A 12VDC
SPST 2P



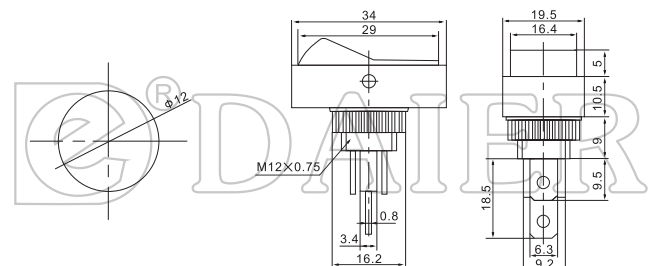
ASW-09D ON-OFF
20A 12VDC (with lamp)
SPST 3P



ASW-10-101 ON-OFF 2P
ASW-10-102 ON-ON 3P
ASW-10-103 ON-OFF-ON 3P
35A 12VDC; 20A 30VDC

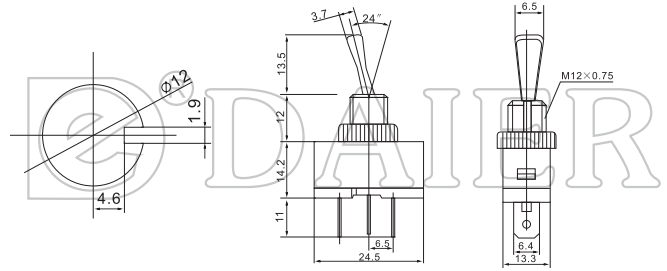


ASW-11D
20A 12VDC (with lamp)
SPST 3P

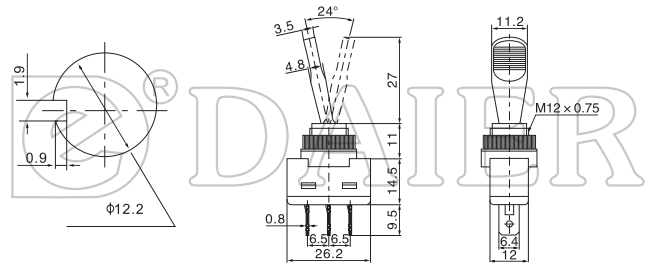




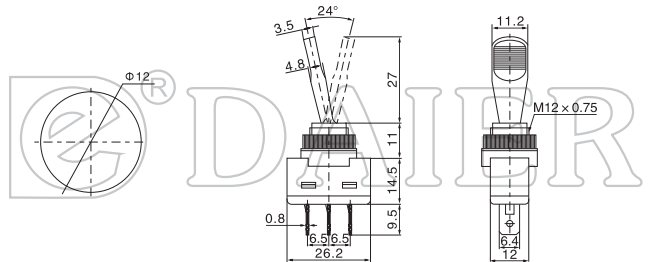
ASW-12-101 ON-OFF 2P
ASW-12-102 ON-ON 3P
20A 12VDC;10A 125VAC



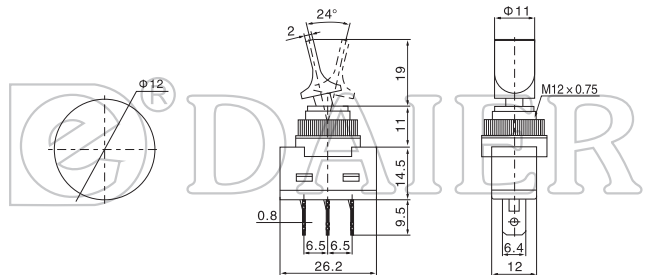
ASW-13D ON-OFF
20A 12VDC(with lamp)
SPST 3P



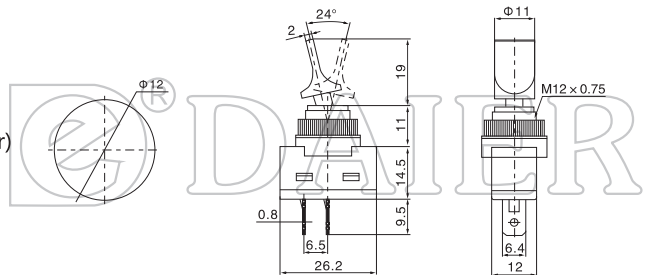
ASW-13-101 ON-OFF 2P
ASW-13-111 (ON)-OFF 2P
ASW-13-102 ON-ON 3P
ASW-13-103 ON-OFF-ON 3P
20A 12VDC;10A 125VAC



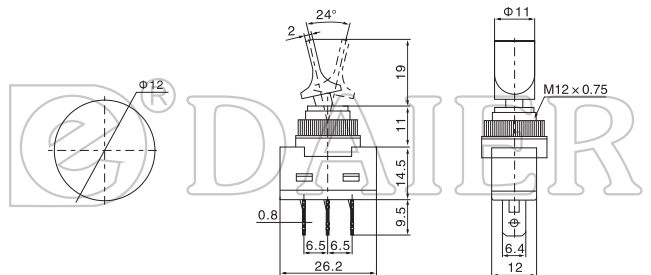
ASW-14D ON-OFF
20A 12VDC(with lamp)
SPST 3P



ASW-14-101 ON-OFF 2P
ASW-14-101C ON-OFF 2P(Chrome Color)
20A 12VDC;10A 125VAC

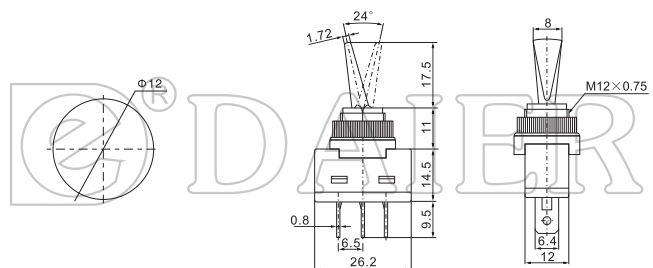


ASW-14-102 ON-ON 3P
ASW-14-103 ON-OFF-ON 3P
20A 12VDC;10A 125VAC

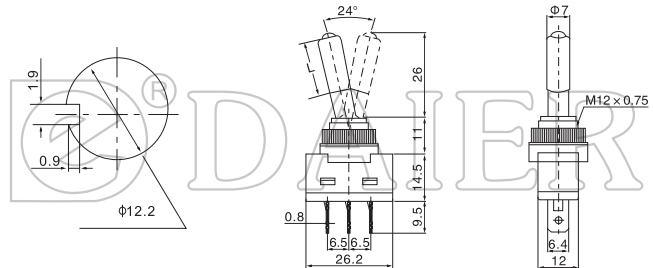




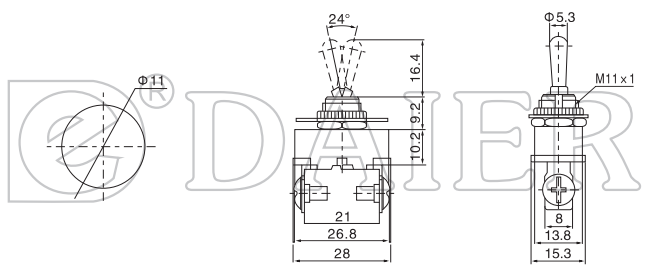
ASW-26-101 ON-OFF
SPST 2P
ASW-26-102 ON-ON
SPDT 3P
20A 12VDC;10A 125VAC



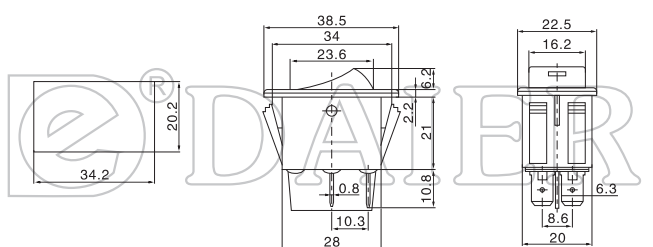
ASW-15D ON-ON L=18
ASW-15D ON-OFF L=24
20A 12VDC(With lamp)
SPST 3P



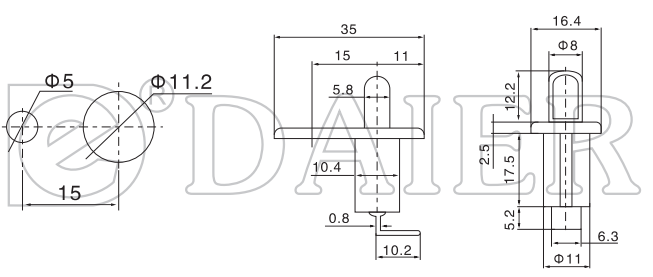
ASW-16-101 ON-OFF
20A 12VDC;10A 125VAC
SPST 2P



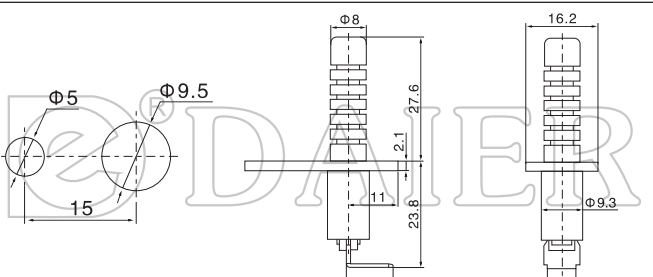
ASW-17D ON-OFF
35A 12VDC(With Lamp)
DPST 4P



ASW-18 ON-(OFF)
20A 12VDC

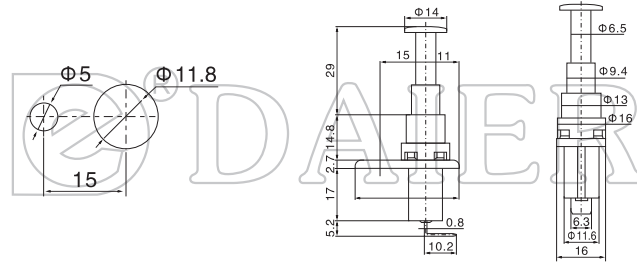


ASW-18-3 ON-(OFF)
20A 12VDC

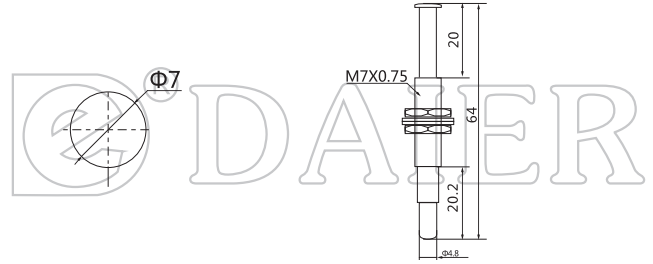




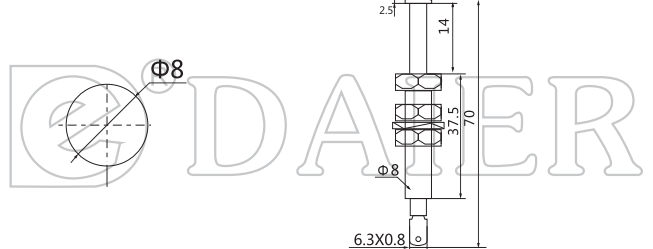
ASW-19 ON-(OFF)
20A 12VDC



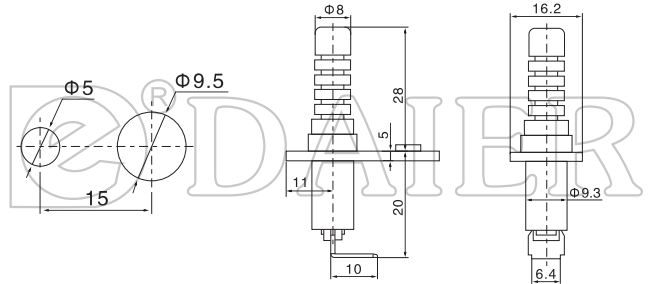
PIN-2 ON-(OFF)
20A 12VDC



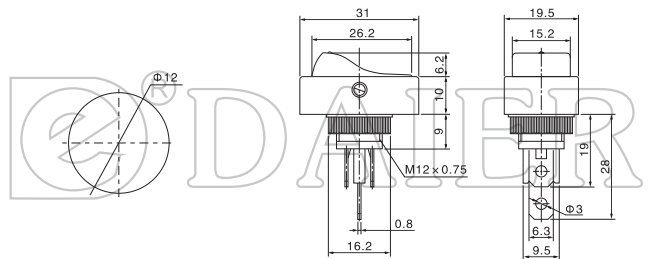
PIN-7 ON-(OFF)
20A 12VDC



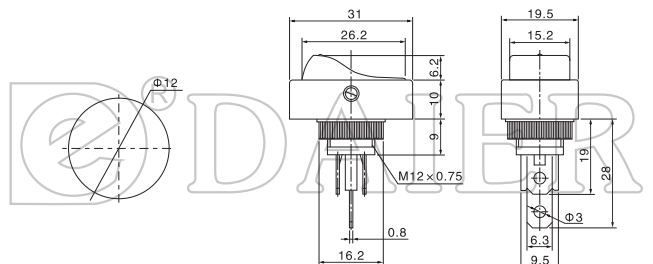
PIN-10R ON-(OFF)
20A 12VDC



ASW-20D ON-(OFF)
20A 12VDC (WITH LAMP)
ASW-20D-A ON-(OFF)
30A 12VDC (WITH LAMP)
SPST 3P

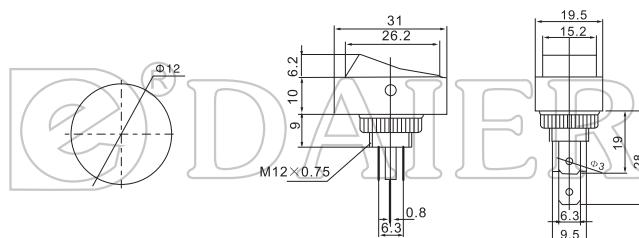


ASW-20D-1 ON-(OFF)
20A 12VDC (WITH LAMP)
ASW-20D-1A ON-(OFF)
30A 12VDC (WITH LAMP)
SPST 3P

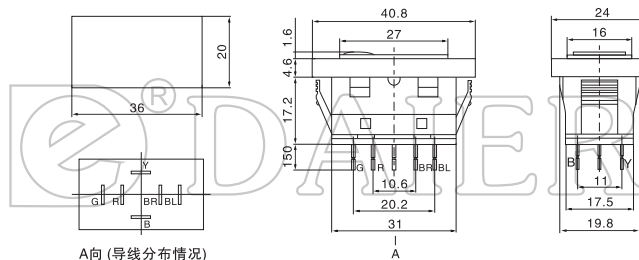




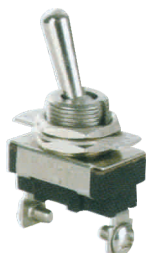
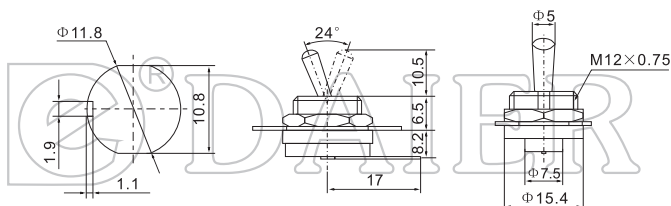
ASW-20D-2 ON-OFF
20A 12VDC(WITH LAMP)
ASW-20D-2A ON-OFF
30A 12VDC(WITH LAMP)
SPST 3P



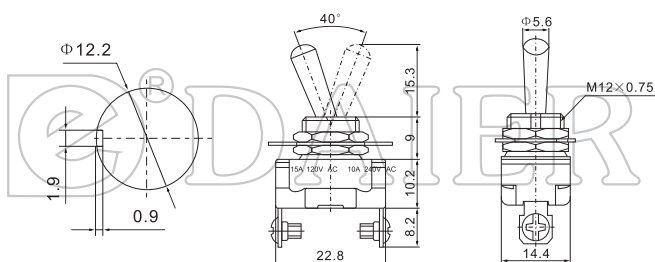
ASW-21D
20A 12VDC(with lamp)
DPDT 6P



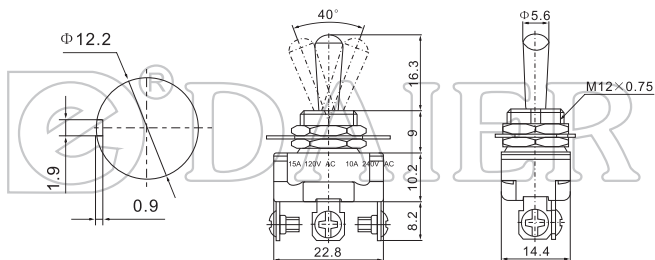
ASW-22-2 ON-OFF
20A 12VDC
SPST 2P



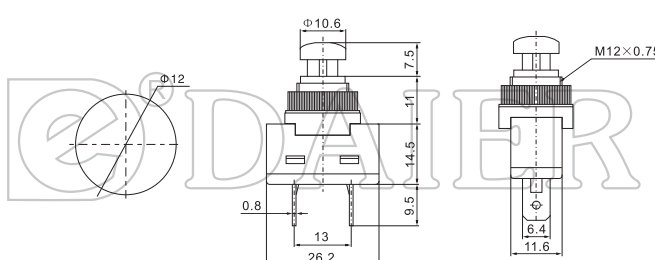
ASW-23-101A ON-OFF
15A 120VAC;10A 240VAC
SPST 2P



ASW-23-102A ON-OFF
ASW-23-103A ON-OFF-ON
15A 120VAC;10A 240VAC
SPDT 3P

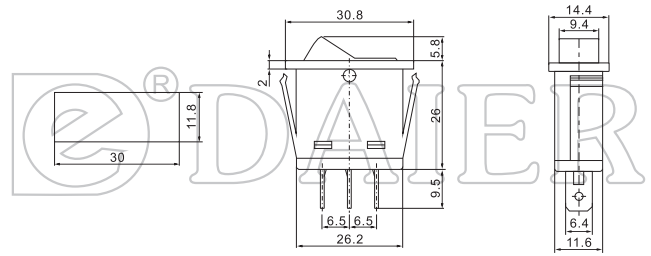


ASW-24 (ON)-OFF
20A 12VDC;10A 125VAC

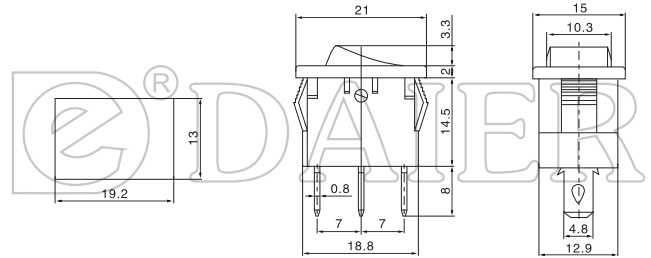




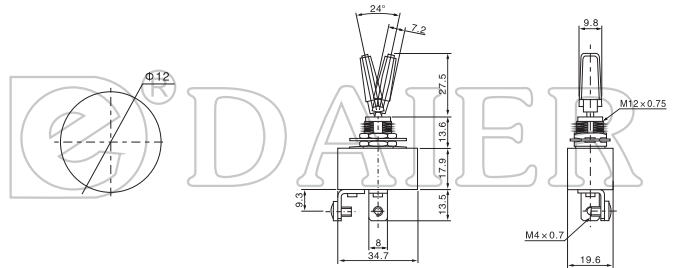
ASW-25D ON-OFF
20A 12VDC;10A 125VAC
SPST 3P



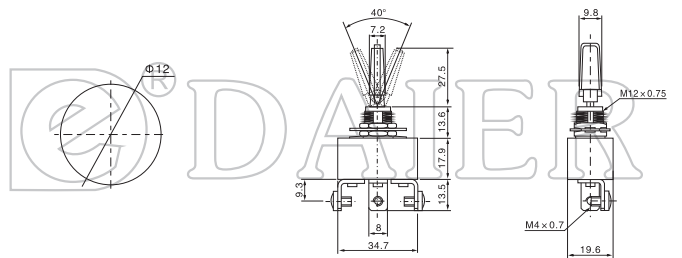
MIRS-101-3D-2 ON-OFF
16A 12VDC(with lamp)
SPST 3P



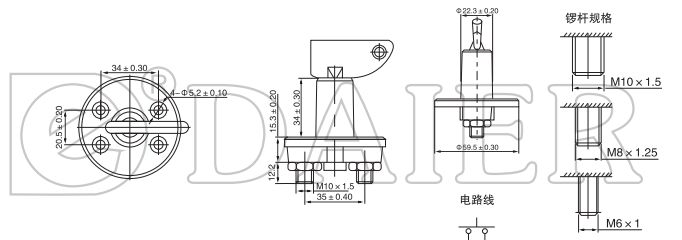
R13-401-101
ON-OFF 2P
50A 12VDC



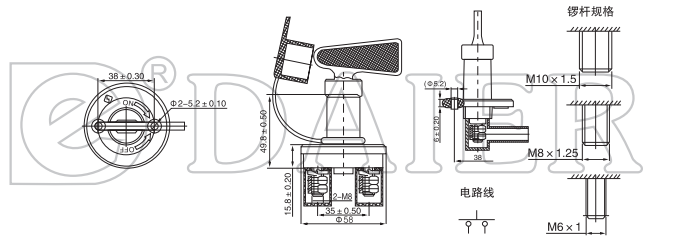
R13-401-103
ON-OFF-ON 3P
50A 12VDC



ASW-A01
300A 60VDC

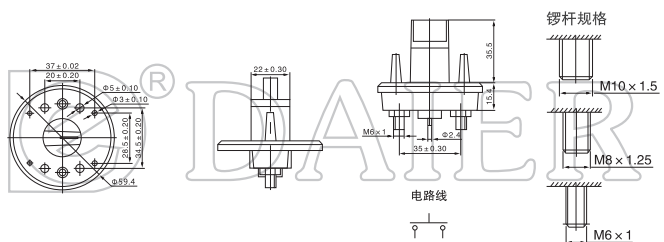


ASW-A01B
300A 60VDC

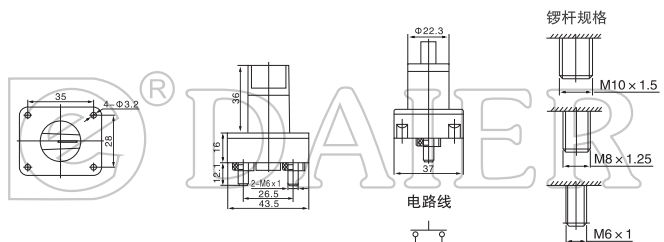




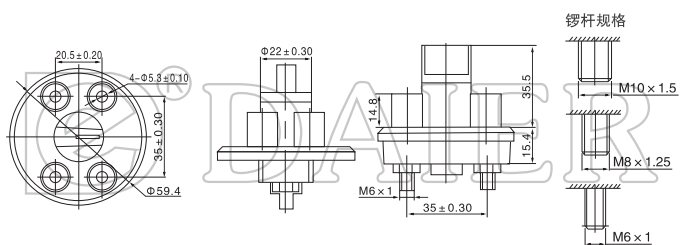
ASW-A03
300A 60VDC



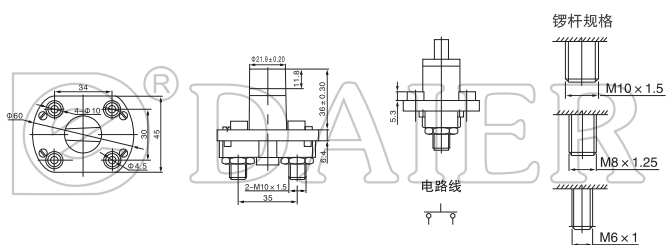
ASW-A03A
300A 60VDC



ASW-A04
300A 60VDC



ASW-A06
300A 60VDC



DR-01
Cigarette Lighter



DR-02
Cigarette Lighter



WL-05
50mA 12VDC

